



UNIVERSITY OF CAMBRIDGE INTERNATIONAL EXAMINATIONS  
General Certificate of Education Advanced Level

CANDIDATE  
NAME

CENTRE  
NUMBER

--	--	--	--	--

CANDIDATE  
NUMBER

--	--	--	--



**BIOLOGY**

**9700/43**

Paper 4 A2 Structured Questions

**October/November 2011**

**2 hours**

Candidates answer on the Question Paper.

No Additional Materials are required.

**READ THESE INSTRUCTIONS FIRST**

Write your Centre number, candidate number and name in the spaces provided at the top of this page.

Write in dark blue or black ink.

Do not use staples, paper clips, highlighters, glue or correction fluid.

**DO NOT WRITE IN ANY BARCODES.**

**Section A**

Answer **all** questions.

**Section B**

Answer **one** question

Circle the number of the Section B question you have answered in the grid below.

At the end of the examination, fasten all your work securely together.

The number of marks is given in brackets [ ] at the end of each question or part question.

For Examiner's Use	
<b>Section A</b>	
1	
2	
3	
4	
5	
6	
7	
8	
9	
<b>Section B</b>	
10 or 11	
<b>Total</b>	

This document consists of **21** printed pages, **2** lined pages and **1** blank page.



## Section A

Answer **all** the questions.

- 1 The Bengal Tiger, *Panthera tigris tigris*, is an endangered mammalian species of Southern Asia. It lives mostly in a forest habitat.

Fig. 1.1 shows a Bengal Tiger.



Fig. 1.1

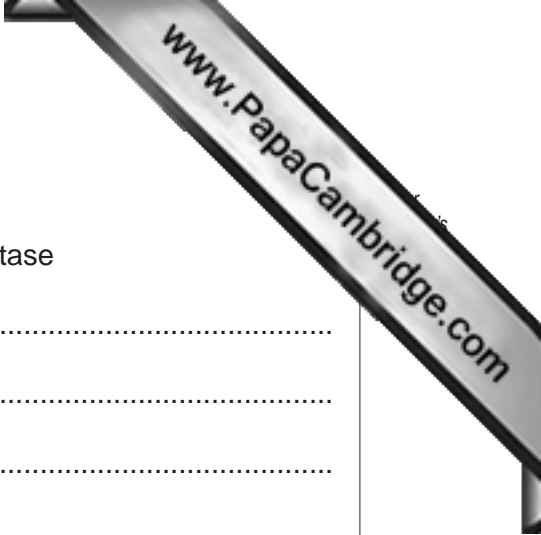
- (a) Table 1.1 shows the relationship between available forest habitat and Bengal Tiger numbers between 1970 and 2010.

Table 1.1

year	forest habitat remaining compared to 1970 (%)	Bengal Tiger numbers
1970	100	37 000
1980	79	27 000
1990	42	12 000
2000	26	3 600
2010	18	1 400







With reference to Fig. 2.1:

(i) describe the effect of immobilisation on the activity of lactase

.....  
.....  
.....  
.....  
.....  
.....  
.....  
..... [3]

(ii) suggest explanations for the differences between the activity of immobilised lactase and free lactase up to 40 °C.

.....  
.....  
.....  
.....  
.....  
.....  
..... [2]

(c) State the advantages of using immobilised enzymes instead of free enzymes.

.....  
.....  
.....  
.....  
.....  
.....  
..... [3]

- 3 (a) Spermatogenesis, the production of male gametes, occurs in the testes of a male from the age of puberty.

Fig. 3.1 outlines the sequence of events that occur during oogenesis.

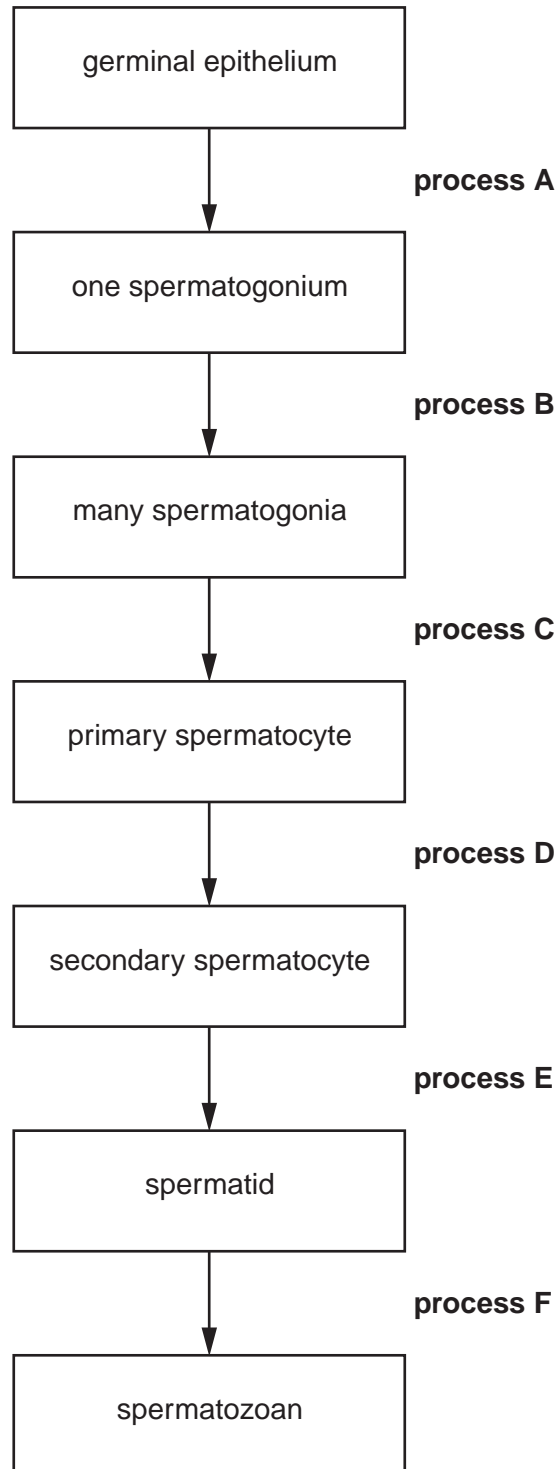


Fig. 3.1

With reference to Fig. 3.1, state what is happening to cells during:

(i) process B

..... [1]

(ii) process D

..... [1]

(iii) process F.

..... [1]

(b) Female gametes develop inside follicles.

Fig. 3.2 shows a section through a mature (Graafian) follicle in a human ovary.

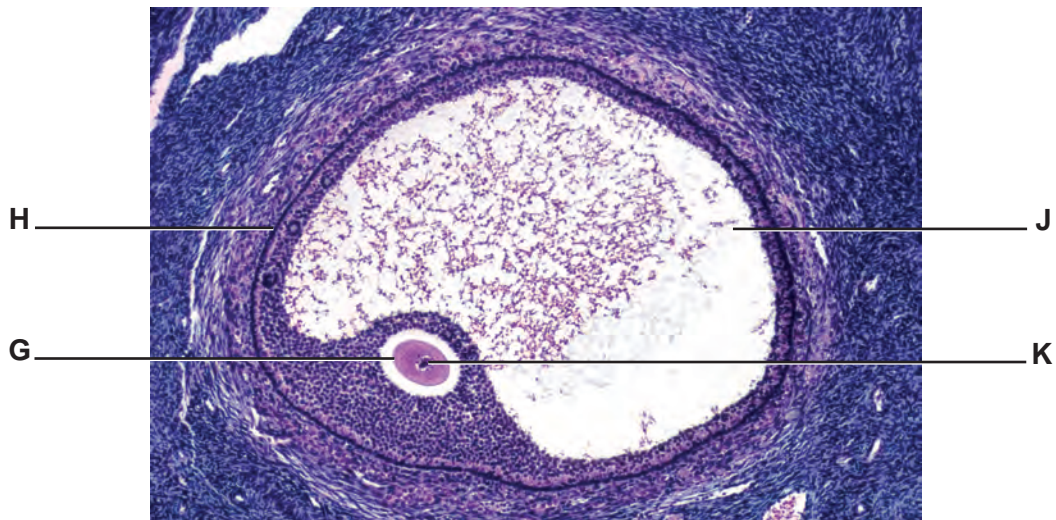


Fig. 3.2

Table 3.1 below lists a number of statements about the mature follicle. Each statement refers to one of the letters **G**, **H**, **J** and **K** shown in Fig. 3.2.

Complete the table using the letters **G**, **H**, **J** and **K**.

Table 3.1

statement	letter
contains protective fluid	
produces oestrogen	
has glycoprotein receptors	
contains 23 chromosomes	

[4]







Question 4 starts on page 10

4 (a) Fig. 4.1 shows the male and female flowers of maize.

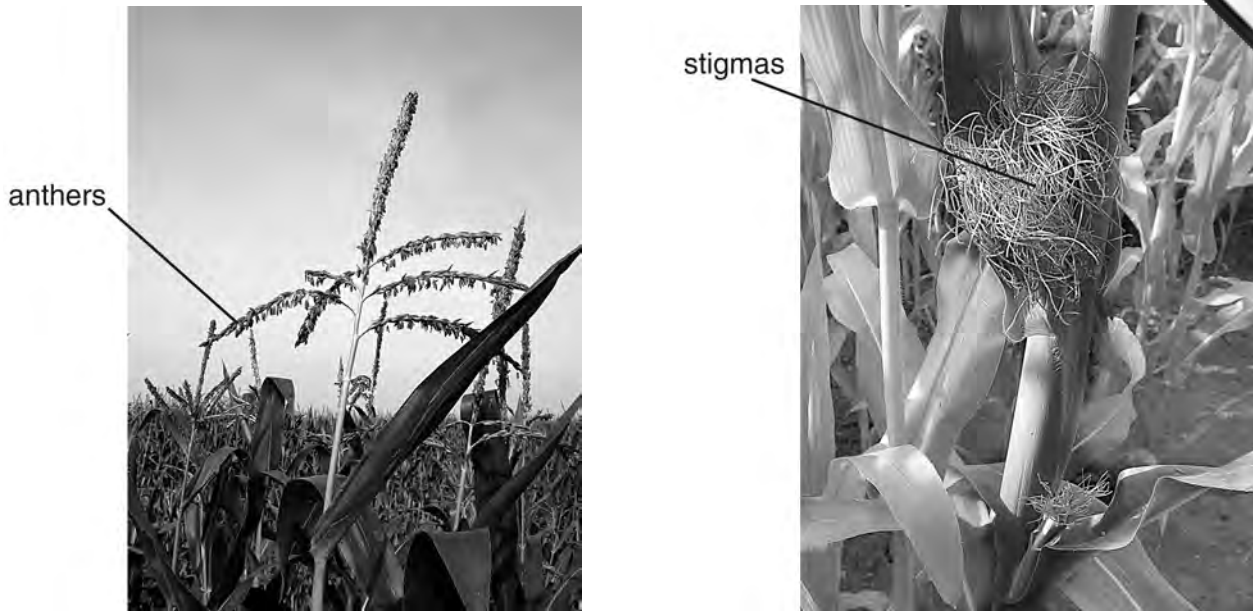


Fig. 4.1

(i) With reference to Fig. 4.1 suggest how the flowering habit of maize encourages wind pollination.

.....  
.....  
.....  
.....  
.....  
.....  
.....  
.....[3]

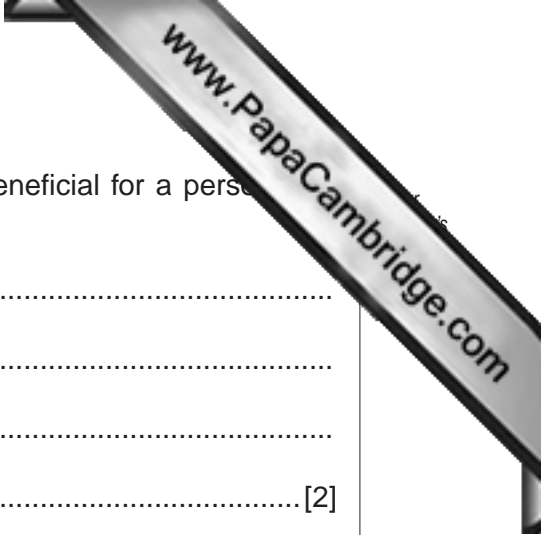
(ii) In a maize plant, the anthers normally ripen and release pollen before the stigmas are mature and ready to receive pollen. This encourages cross-pollination.

Explain **two** potential advantages of cross-pollination to a plant species.

.....  
.....  
.....  
.....  
.....  
.....  
.....[2]







(ii) State, giving a reason, which type of grain would be beneficial for a person with anaemia.

.....

.....

.....

..... [2]

[Total: 14]

- 5 (a) The steps involved in a method of production of human insulin by gene technology are listed in Table 5.1. The steps are **not** listed in the correct order.

Table 5.1

step	description
<b>A</b>	DNA coding for human insulin inserted into cut plasmid vector
<b>B</b>	genetically modified bacteria identified
<b>C</b>	mRNA for human insulin isolated in $\beta$ cells
<b>D</b>	plasmid vector inserted into bacterium
<b>E</b>	genetically modified bacteria cloned
<b>F</b>	DNA for human insulin cloned
<b>G</b>	human insulin harvested
<b>H</b>	cDNA coding for human insulin synthesised

- (i) Complete Table 5.2 to show the steps in the correct order.

Two of the steps have been done for you.

Table 5.2

correct order	letter of step
1	<b>C</b>
2	
3	
4	
5	<b>D</b>
6	
7	
8	

[4]

- (ii) Name the enzymes responsible for the following steps:

step A .....

step H .....

[2]



(b) Explain **two** advantages of treating diabetes with human insulin produced by technology rather than using insulin from animals.

.....

.....

.....

.....

.....

..... [2]

[Total: 8]

6 (a) Fig. 6.1 outlines anaerobic respiration in yeast cells.

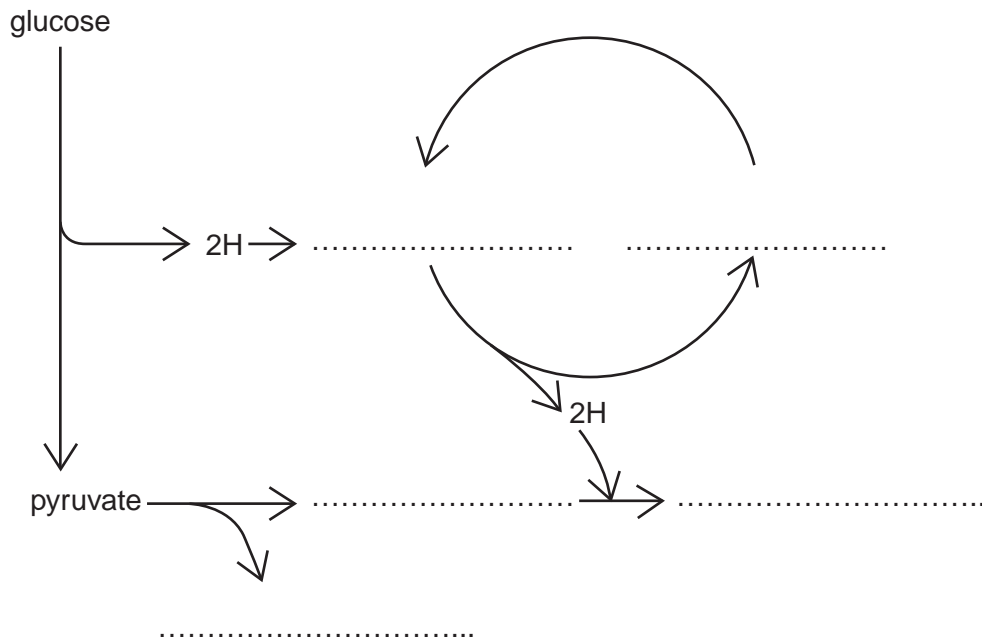


Fig. 6.1

Complete Fig. 6.1 by writing in the missing compounds. [5]

(b) Describe how anaerobic respiration in mammalian cells differs from anaerobic respiration in yeast cells.

.....  
.....  
.....  
.....  
.....  
.....  
.....  
..... [3]







8 The following passage is a summary of the main principles of artificial selection.

Some of the words have been omitted.

Write the most appropriate term in each space.

When humans purposefully apply selection ..... to members of a population, the process is known as artificial selection. For example, people have tried to 'improve' their cattle for thousands of years. It is desirable for a dairy farmer to have cows with a high milk yield. The farmer will select cows with high milk yields and mate them with bulls whose ..... have high milk yields. Some of the ..... conferring high milk yield are passed onto their female offspring who are then chosen for breeding. This will continue for many ..... . Artificial selection can have disadvantages such as ..... depression which can lead to infertility. [5]

[Total: 5]

- 9 (a) When a part of the body is damaged or injured, action potentials are sent to the brain. The brain responsible for the perception of pain.

Explain how the structure of a sensory neurone can enable the action potentials to reach the brain very quickly.

.....

.....

.....

.....

..... [2]

- (b) The pain associated with osteoarthritis can be relieved using transcutaneous electrical nerve stimulation (TENS). It uses electrical impulses to stimulate the nerve endings at, or near, the site of the pain. Self-adhesive electrodes are stuck on the skin and attached to a small, portable power unit.

Fig. 9.1 shows a TENS machine in use.



Fig. 9.1

It is thought that TENS triggers the release of natural painkillers called endorphins, which are similar in shape to painkilling drugs such as morphine.





A series of horizontal dotted lines for writing, spanning the width of the page.

